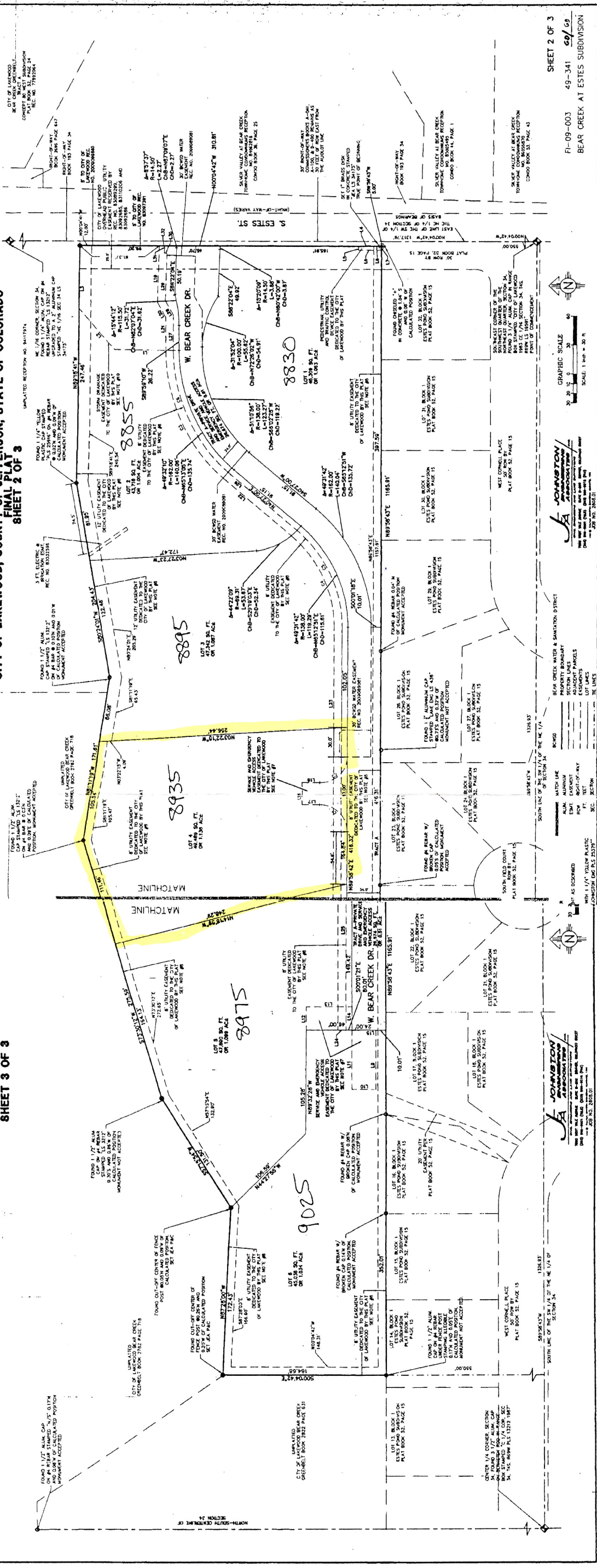


RECEPTION NO. 2009128950

BEAR CREEK AT ESTES SUBDIVISION
 A PART OF THE SOUTHWEST ONE-QUARTER (SW 1/4) OF THE NORTHEAST ONE-QUARTER (NE 1/4) OF SECTION 34
 TOWNSHIP 4 SOUTH, RANGE 69 WEST OF THE 6TH PRINCIPAL MERIDIAN
 CITY OF LAKEWOOD, COUNTY OF JEFFERSON, STATE OF COLORADO
FINAL PLAT
SHEET 3 OF 3

IN NO. 2009128950

BEAR CREEK AT ESTES SUBDIVISION
 A PART OF THE SOUTHWEST ONE-QUARTER (SW 1/4) OF THE NORTHEAST ONE-QUARTER (NE 1/4) OF SECTION 34
 TOWNSHIP 4 SOUTH, RANGE 69 WEST OF THE 6TH PRINCIPAL MERIDIAN
 CITY OF LAKEWOOD, COUNTY OF JEFFERSON, STATE OF COLORADO
FINAL PLAT
SHEET 2 OF 3



SHEET 2 OF 3

FI-09-003 49-341 69

BEAR CREEK AT ESTES SUBDIVISION

GRAPHIC SCALE
1" = 30'

JOHNSTON
 PROFESSIONAL ENGINEER
 LICENSE NO. 100000000
 1000 W. 10TH AVENUE, SUITE 100
 DENVER, CO 80202

BEAR CREEK WATER & SANITATION DISTRICT
 PROPERTY BOUNDARY
 SECTION LINES
 ALUM. EXHIBIT
 ROW RIGHT-OF-WAY
 EASEMENTS
 LOT LINES
 THE LINES

WITH 1 1/4" YELLOW PLASTIC
 CONDUIT LINE TYPED
 AS SHOWN

FOUND 1 1/2" ALUM. CAP STAMPED "S" ON REAR BEARING SURFACE OF CALCULATED POSITION MONUMENT ACCEPTED

FOUND 1 1/2" ALUM. CAP STAMPED "S" ON REAR BEARING SURFACE OF CALCULATED POSITION MONUMENT ACCEPTED

FOUND 1 1/2" ALUM. CAP STAMPED "S" ON REAR BEARING SURFACE OF CALCULATED POSITION MONUMENT ACCEPTED

FOUND 1 1/2" ALUM. CAP STAMPED "S" ON REAR BEARING SURFACE OF CALCULATED POSITION MONUMENT ACCEPTED