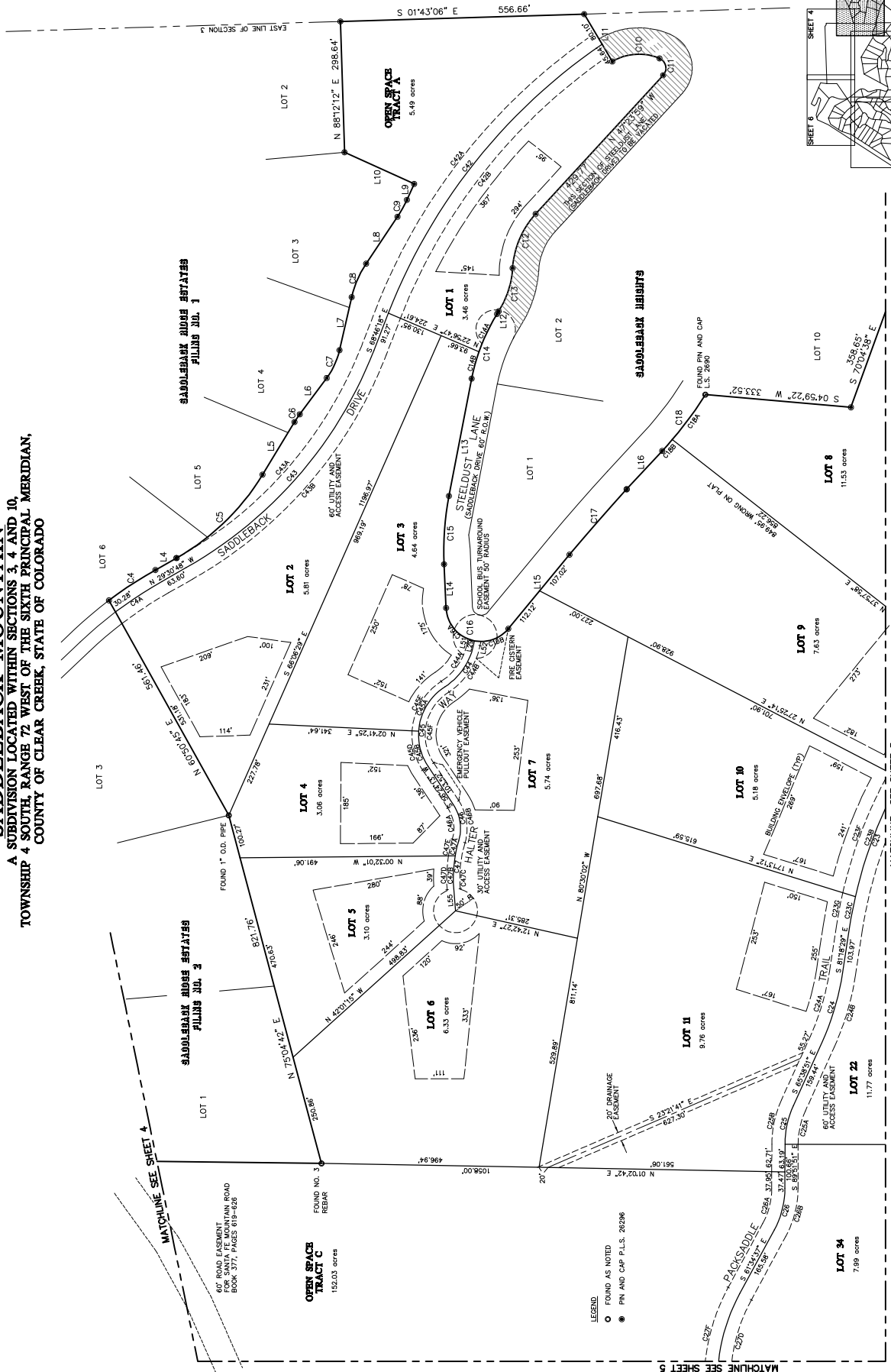
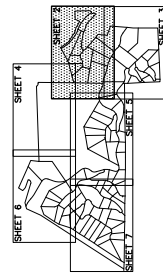


SADDLEBACK MOUNTAIN
 A SUBDIVISION LOCATED WITHIN SECTIONS 3, 4 AND 10,
 TOWNSHIP 4 SOUTH, RANGE 72 WEST OF THE SIXTH PRINCIPAL MERIDIAN,
 COUNTY OF CLEAR CREEK, STATE OF COLORADO



LEGEND
 ○ FOUND AS NOTED
 ● PIN AND CAP P.L.S. 26286



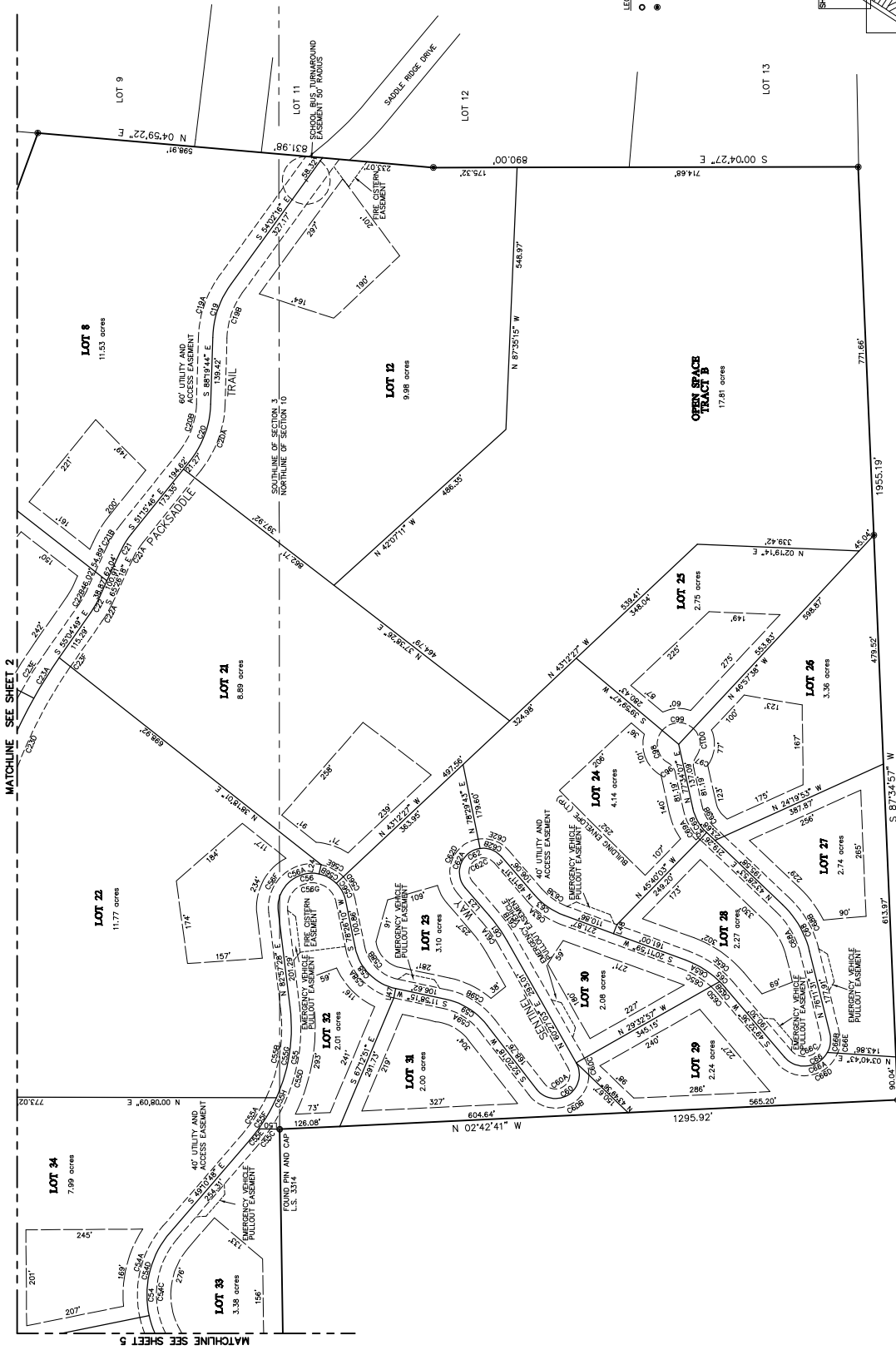
PCACORP
 P.C. Associates, Inc. and Boulder Engineering Corporation
 1000 North 10th Street, Suite 102
 Boulder, Colorado 80513
 Phone: 303.440.0900 FAX: 303.440.9800

MATCHLINE SEE SHEET 4

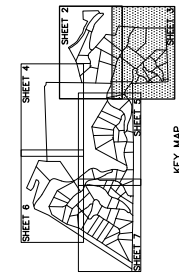
MATCHLINE SEE SHEET 3

MATCHLINE SEE SHEET 5

SADDLEBACK MOUNTAIN
 A SUBDIVISION LOCATED WITHIN SECTIONS 3, 4 AND 10,
 TOWNSHIP 4 SOUTH, RANGE 72 WEST OF THE SIXTH PRINCIPAL MERIDIAN,
 COUNTY OF CLEAR CREEK, STATE OF COLORADO



LEGEND
 ○ FOUND AS NOTED
 ● PIN AND CAP P.L.S. 26296



RCA GROUP
 R.C.A. Group, Inc. an Equal Opportunity Corporation
 10000 E. 1st Avenue, Suite 100
 Denver, Colorado 80231
 Phone: 303.441.4287 FAX: 303.441.4000

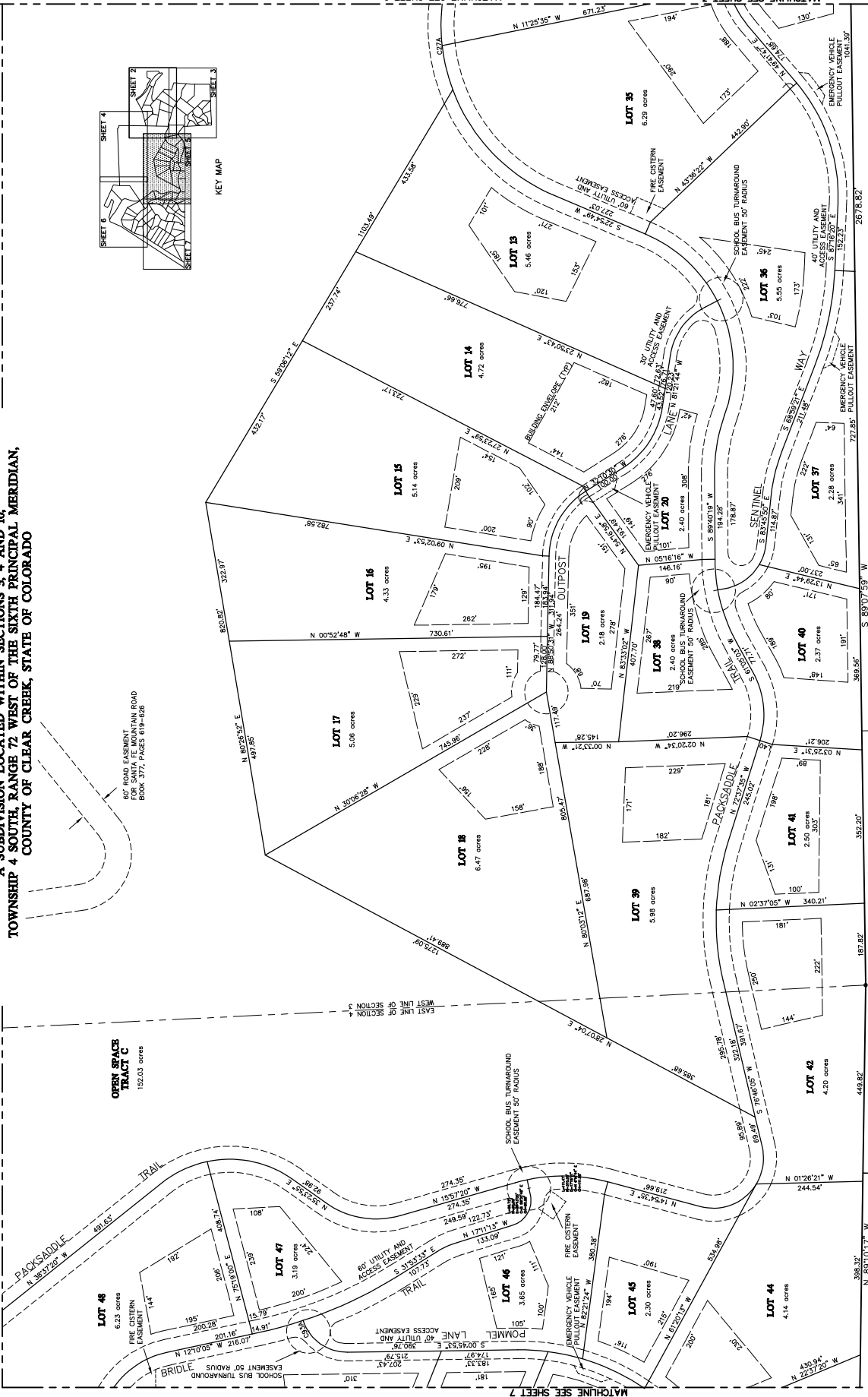
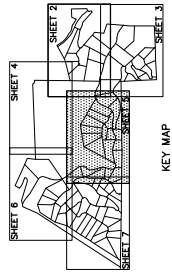
CITY OF GOLDEN
 UNPLATTED

SADDLEBACK MOUNTAIN
 A SUBDIVISION LOCATED WITHIN SECTIONS 3, 4 AND 10,
 TOWNSHIP 4 SOUTH, RANGE 72 WEST OF THE SIXTH PRINCIPAL MERIDIAN,
 COUNTY OF CLEAR CREEK, STATE OF COLORADO

MATCHLINE SEE SHEET 6

MATCHLINE SEE SHEET 4

OPEN SPACE TRACT C
 152.03 acres



MATCHLINE SEE SHEET 7
 MATCHLINE SEE SHEET 3
 MATCHLINE SEE SHEET 2
 MATCHLINE SEE SHEET 1
 MATCHLINE SEE SHEET 8

KCA GROUP
 A subsidiary of the Real Estate Group
 1414 West 17th Avenue, Suite 102
 Denver, CO 80202
 Phone: 303.733.7000 FAX: 303.463.0800

PARCEL K-1

PARCEL K-2

PARCEL L